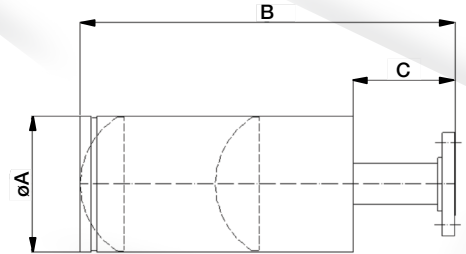


FOAM EQUIPMENT

Medium expansion foam generator



These generators are built both in fixed or mobile design, where the mobile units have an handle for being transported and a thread connection accepting quick couplings, while the fixed design types have a flanged connection for being connected to a piping system. All units have a typical expansion ratio of 1:60, which can vary with the foam agent used.



Materials

- Body AISI 304/AISI 316 stainless steel
- Spray nozzle AISI 316 stainless steel
- Connection (mobile) Brass couplings
- Connection (fixed) Carbon steel ASTM A105 flange (option stainless)

Please ask our offices for additional connection styles.

Code	Flow lt At 5 bar	Coupling		Dia A mm	B mm	C mm	Weight kg
		Flange	UNI				
URG-M/F320	200	Flange 1 1/2"	UNI 45-70	204	550	150	7
URG-M/F340	400	Flange 2"	UNI 45-70	204	550	150	8
URG-M/F360	600	Flange 2"	UNI 70	204	550	150	10
URG-M/F380	800	Flange 3"	UNI 70	400	800	150	18
URG-F400	1000	Flange 3"		400	800	150	18
URG-F420	1200	Flange 3"		400	800	150	18
URG-F460	1600	Flange 3"		400	800	150	18

URG-**M** for fixed flanged nozzles
URG-**F** for mobile nozzles with couplings

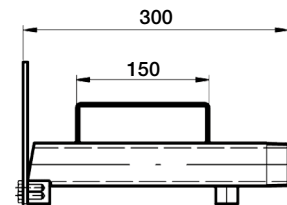
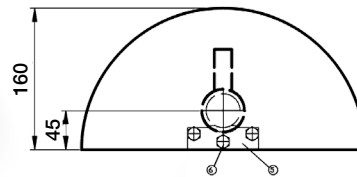
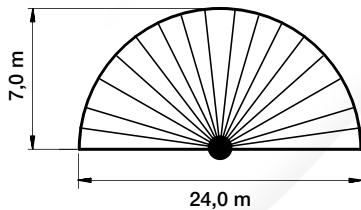
Water shields

SDM heat shields are designed to protect personnel from the heating effects of a near fire through a water screen. The table below shows the capacity of the different models, as well as the water screen dimensions in meters, for different feed pressure values. Heat shields are manufactured out of high quality AISI 316L stainless steel for optimum protection from corrosion and marine environment. The product codes shown refer to the normally supplied types, with a male BSPT thread. We can quote upon request, for different thread types or the most popular quick couplings.



Material

B31 - AISI 316L stainless steel



180°	Code	INLET inches	Capacity Lpm at pressure (bar)				
			1	3	5	7	10
*	URC K150 B31B	1 + 1/2"	72	125	160	190	--
*	URC K200 B31B	2"	110	190	245	290	--
*	URC K250 B31B	2 1/2"	175	300	390	460	--